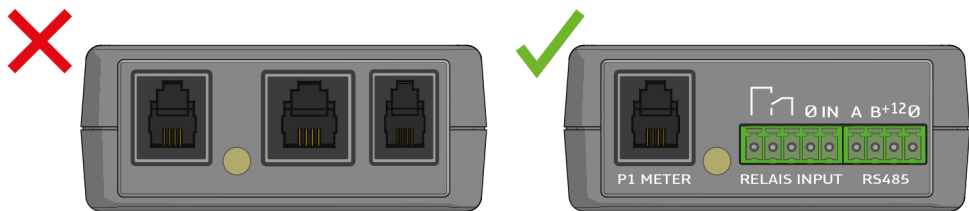


New sensorbox connection

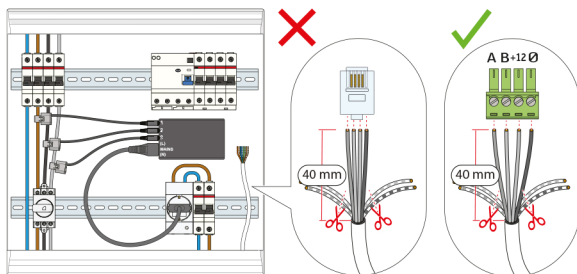
Our new Ratio chargers and sensorbox have 4-pin screw-type connectors for the connection between the charger and the Sensor box. This allows you to easily connect the data cable without additional tools.



As a result of these changes, the following steps in the installation manual have changed:

Install the Sensorbox in the consumer unit

9. Strip the wires of the data cable (not included).
10. Insert four wires of the data cable into the green terminal block connector (A, B, +12, 0).
11. Secure the wires to the terminals. Use a voltage tester screwdriver.
12. Remove the unused wires.
13. Write down the colours and order of the inserted wires of the data cable.



Install the data cable in the charger

6. Strip the wires of the data cable.
7. Insert four wires into the terminal block connector in the exact same order as in the Sensorbox (A, B, +12, 0).
8. Secure the wires to the terminals. Use a voltage tester screwdriver.
9. Remove the unused wires.

